

Your Participant Portal

Access your health information in one, convenient location

Managing your health information should be simple and secure. That's where the PA Health & Wellness (PHW) Participant Portal comes in. This free digital tool offers a one-stop-shop for your health coverage.

24/7 Access to Your Information

Login to the Participant Portal at any time to view your benefits, prescriptions, rewards, and more. Check your coverage. Download your digital ID card. Everything you need is just a few clicks away. Have a question? Send a secure message to our team!

Easy Claim Management

With the PHW Participant Portal you can see your claims history. Check the status of your claim and other related details.

Find In-Network Providers

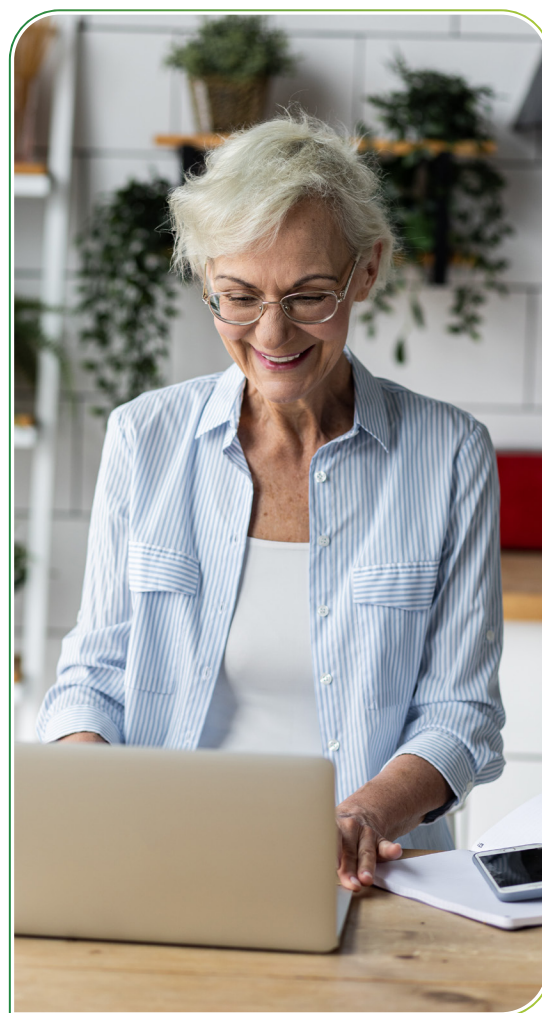
Need to find a doctor? Use our Find a Provider tool to see local in-network providers in your area.

Quick Access to ID Cards

Don't worry about a lost insurance card! You can download or print your digital Participant ID card directly from the portal.

Why It Matters

Using the PHW Participant Portal puts you in control. It helps you to make informed decisions, stay organized, and get the most of your health plan.



ATTENTION: If you speak a language other than English, free language assistance services are available to you. Appropriate auxiliary aids and services to provide information in accessible formats are also available free of charge. Call 1-844-626-6813 (TTY: 711) or speak to your provider.

ATENCIÓN: Si habla español, tiene a su disposición servicios gratuitos de asistencia lingüística. También están disponibles de forma gratuita ayuda y servicios auxiliares apropiados para proporcionar información en formatos accesibles. Llame al 1-844-626-6813 (TTY: 711) o hable con su proveedor.

注意：如果您说 中文，我们将免费为您提供语言协助服务。我们还免费提供适当的辅助工具和服务，以无障碍格式提供信息。致电 1-844-626-6813（文本电话：711）或咨询您的服务提供商。

PA Health & Wellness (PHW) complies with applicable Federal civil rights laws and does not discriminate on the basis of race, color, national origin, age, disability, or sex (including pregnancy, sexual orientation, and gender identity). PHW does not discriminate on the basis of race, color, creed, sex, religion, age, national origin, ancestry, marital status, sexual orientation, gender identity, language, Medical Assistance (MA) status, income status, program participation, health status, disease or pre-existing condition, anticipated need for healthcare or physical or mental handicap.